

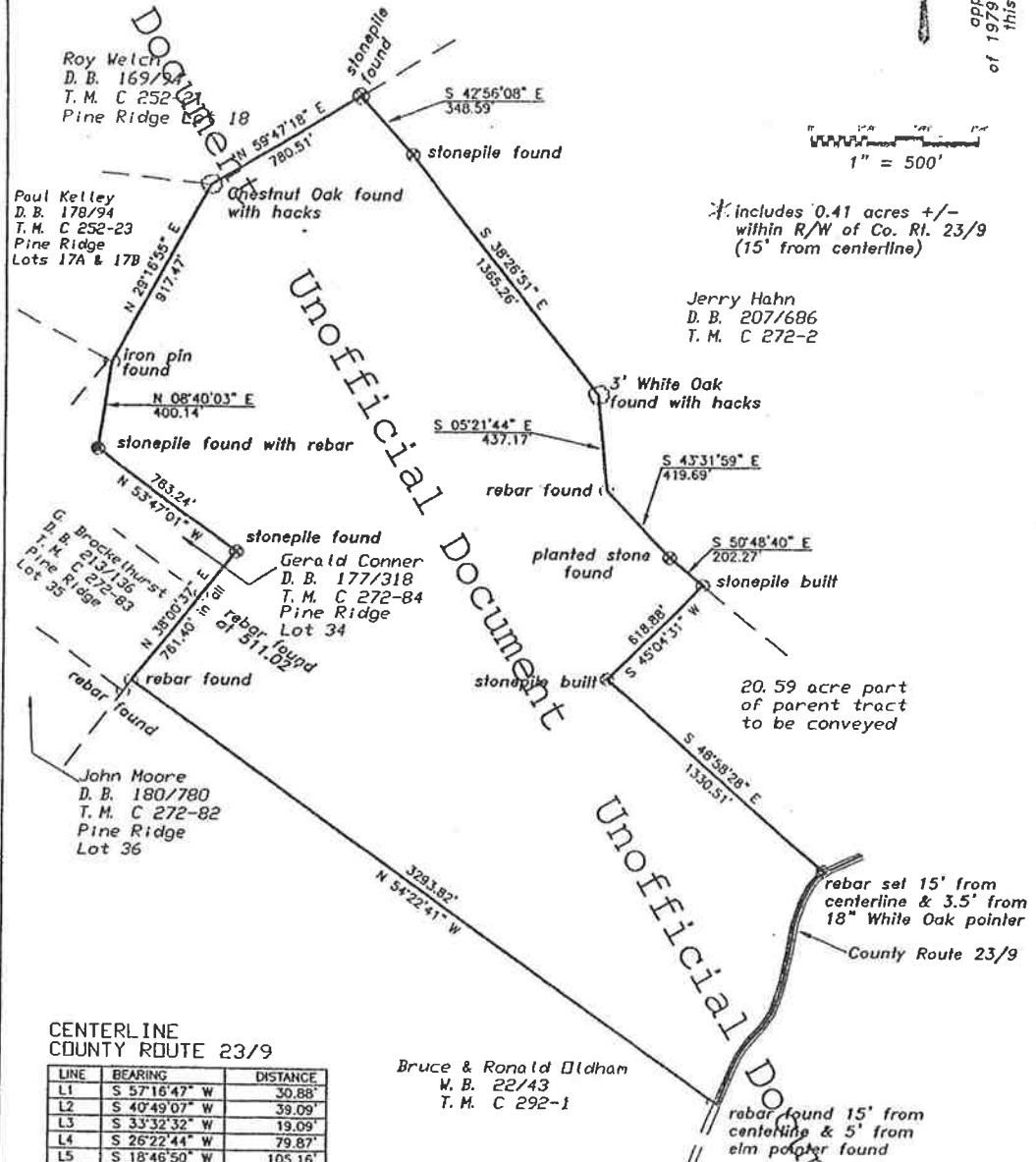
Unofficial Document

Plat of Survey of  
170.41<sup>\*</sup> Acres +/-

approximate meridian  
of 1979 survey of parent tract  
this survey Mar. 2004



1" = 500'



\* includes 0.41 acres +/-  
within R/W of Co. Rt. 23/9  
(15' from centerline)

Jerry Hahn  
D. B. 207/686  
T. M. C 272-2

20.59 acre part  
of parent tract  
to be conveyed

rebar set 15' from  
centerline & 3.5' from  
18" White Oak pointer  
County Route 23/9

rebar found 15' from  
centerline & 5' from  
elm pointer found

Roy Welch  
D. B. 169/94  
T. M. C 252-2  
Pine Ridge Lot 18

Paul Kelley  
D. B. 178/94  
T. M. C 252-23  
Pine Ridge  
Lots 17A & 17B

G. Brocke  
D. B. 217/36  
T. M. C 272-83  
Pine Ridge  
Lot 35

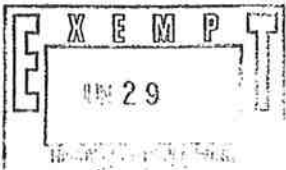
Gerald Conner  
D. B. 177/318  
T. M. C 272-84  
Pine Ridge  
Lot 34

John Moore  
D. B. 180/780  
T. M. C 272-82  
Pine Ridge  
Lot 36

Bruce & Ronald Oldham  
W. B. 22/43  
T. M. C 292-1

CENTERLINE  
COUNTY ROUTE 23/9

LINE	BEARING	DISTANCE
L1	S 57°16'47" W	30.88'
L2	S 40°49'07" W	39.09'
L3	S 33°32'32" W	19.09'
L4	S 26°22'44" W	79.87'
L5	S 18°46'50" W	105.16'
L6	S 09°13'14" W	121.83'
L7	S 12°19'25" W	159.43'
L8	S 17°05'58" W	72.88'
L9	S 22°02'02" W	63.03'
L10	S 32°49'38" W	78.90'
L11	S 41°04'27" W	130.58'
L12	S 32°19'37" W	41.66'
L13	S 26°19'47" W	75.24'
L14	S 22°29'47" W	176.12'



Green Engineering Office  
Burlington, WV. 304/289-5033

Unofficial Document

Unofficial Document