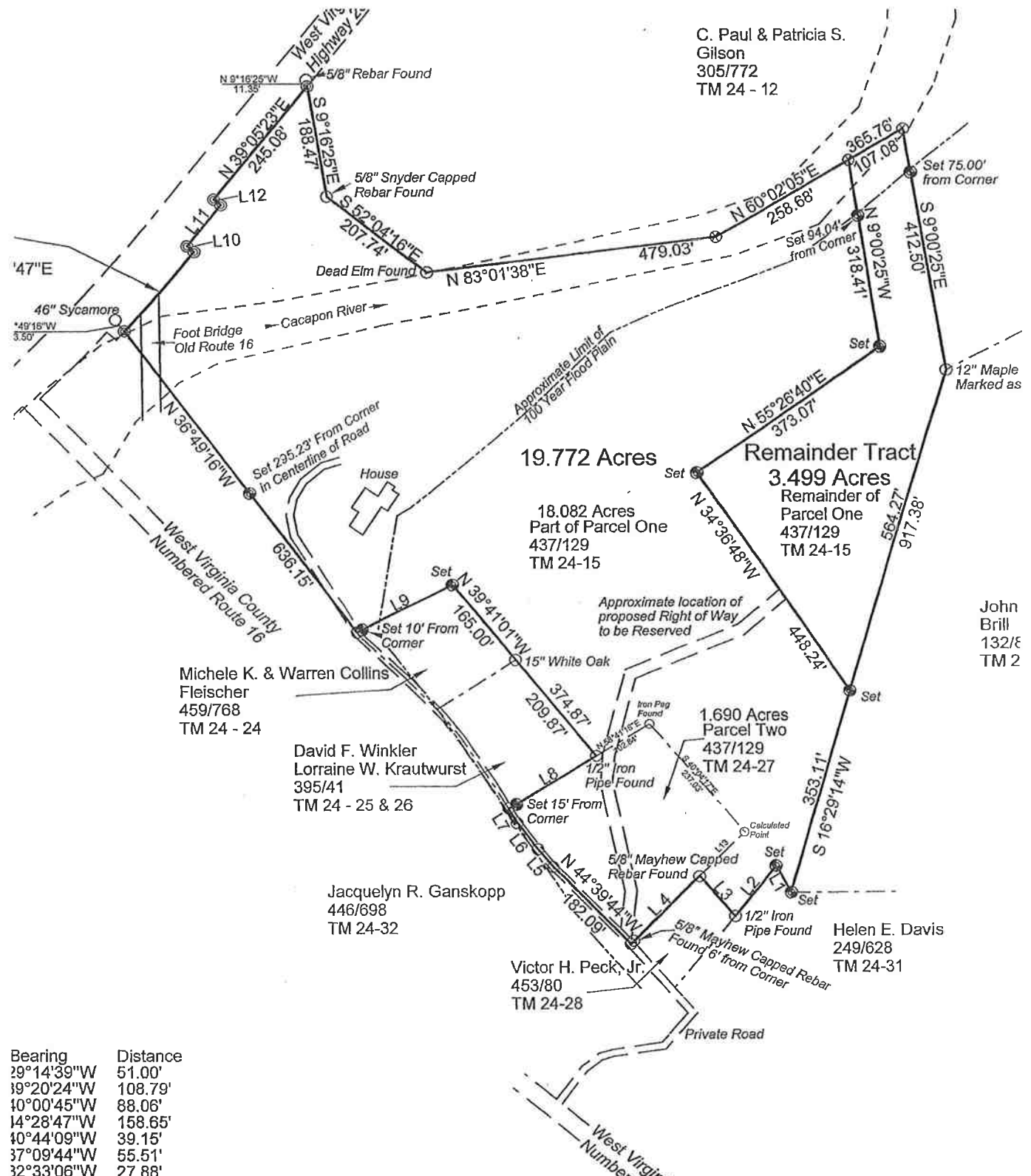


C. Paul & Patricia S.
 Gilson
 305/772
 TM 24 - 12



Michele K. & Warren Collins
 Fleischer
 459/768
 TM 24 - 24

David F. Winkler
 Lorraine W. Krautwurst
 395/41
 TM 24 - 25 & 26

Jacquelyn R. Ganskopp
 446/698
 TM 24-32

Victor H. Peck, Jr.
 453/80
 TM 24-28

Helen E. Davis
 249/628
 TM 24-31

19.772 Acres
 18.082 Acres
 Part of Parcel One
 437/129
 TM 24-15

Remainder Tract
 3.499 Acres
 Remainder of
 Parcel One
 437/129
 TM 24-15

1.690 Acres
 Parcel Two
 437/129
 TM 24-27

John
 Brill
 132/ε
 TM 2

Bearing	Distance
29°14'39"W	51.00'
39°20'24"W	108.79'
10°00'45"W	88.06'
14°28'47"W	158.65'
10°44'09"W	39.15'
37°09'44"W	55.51'
32°33'06"W	27.88'