

PLAT OF SURVEY FOR PATRICIA W. GARROT, TRUSTEE

Hickory Hill Farm

2.8 Miles East of Petersburg, WV

U. S. Route 220

South Fork Dist., Hardy County, West Virginia

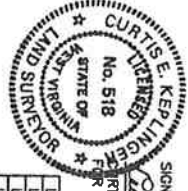
88.93 Total Acres - Part of Tax Map 341-2

Excluding U.S. Route 220 Acreage

Date: July 3, 2006
 Scale: 1" = 300'
 Revised: 4-23-2007

Surveyed Jan. 2005 By
 L & W Enterprises, Inc.
 14 South Grove Street
 Petersburg, WV 257-4818

Drawn By: CEK

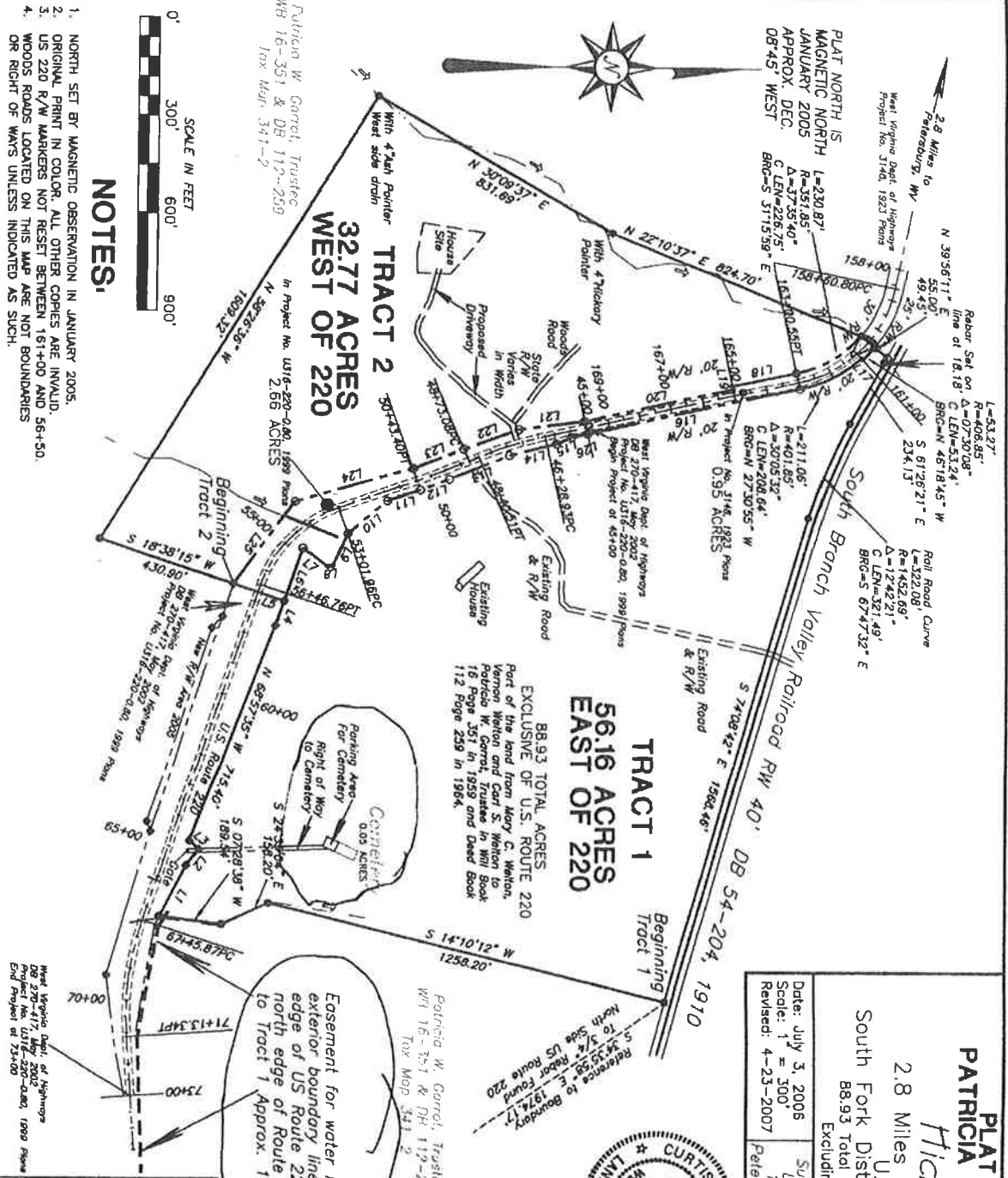


SIGNED AND SEALED:
 Curtis E. Kepling
 Licensed Land Surveyor
 No. 518
 State of West Virginia

LINE	BEARING	DISTANCE
L1	N 62°59'22" W	178.75'
L2	N 52°33'59" W	83.75'
L3	S 42°49'20" W	38.94'
L4	N 71°33'19" W	79.80'
L5	S 16°58'18" W	165.12'
L6	N 71°32'46" W	170.65'
L7	N 56°22'51" E	98.18'
L8	N 07°56'03" W	108.81'
L9	N 63°48'39" W	108.81'
L10	N 40°08'40" W	108.14'
L11	N 18°36'31" W	108.61'
L12	N 20°12'01" W	98.58'
L13	N 22°25'15" W	148.85'
L14	N 14°15'25" W	148.85'
L15	N 24°01'17" W	51.03'
L16	N 12°13'01" W	50.00'
L17	N 12°28'09" W	668.59'
L18	N 47°28'19" E	5.00'
L19	S 12°28'09" E	198.45'
L20	N 77°31'51" E	108.88'
L21	S 12°21'51" E	408.14'
L22	S 07°31'22" E	203.19'
L23	S 20°10'42" E	177.84'
L24	S 21°23'22" E	168.93'
L25	S 15°51'05" E	377.65'
L26	S 54°00'54" E	316.15'

LEGEND

- PROPERTY LINE, EXTERROR BOUNDARY
- EXISTING ROAD AND RIGHT OF WAY
- US 220 ROAD RIGHT-OF-WAY
- KICK OF PAVEMENT OR DRAIN
- APPROXIMATE RUN OR DRAIN
- REPRESENTIVE LINE
- US 220 CENTERLINE
- CORNER WITH NO MARKER SET
- 5/8" CORNER OR REFERENCE TO CORNER
- 3/4" PAVED ROUND



- NOTES.**
1. NORTH SET BY MAGNETIC OBSERVATION IN JANUARY 2005.
 2. ORIGINAL PRINT IN COLOR. ALL OTHER COPIES ARE INVALID.
 3. US 220 R/W MARKERS NOT RESET BETWEEN 161+00 AND 56+50.
 4. WOODS ROADS LOCATED ON THIS MAP ARE NOT BOUNDARIES OR RIGHT OF WAYS UNLESS INDICATED AS SUCH.

Patricia W. Garrot, Trustee
 WH 16-351 & DB 117-239
 Tax Map 341-2

88.93 TOTAL ACRES
 EXCLUSIVE OF U.S. ROUTE 220
 Part of the land from Mary C. Wenton,
 Veranda Wenton and Carl S. Wenton to
 Patricia W. Garrot, Trustee in Will Book
 18 Page 351 in 1959 and Deed Book
 112 Page 259 in 1964.

Patricia W. Garrot, Trustee
 WH 16-351 & DB 117-239
 Tax Map 341-2

Easement for water line from
 exterior boundary line north
 edge of US Route 220 along
 north edge of Route 220
 to Tract 1 Approx. 1400'