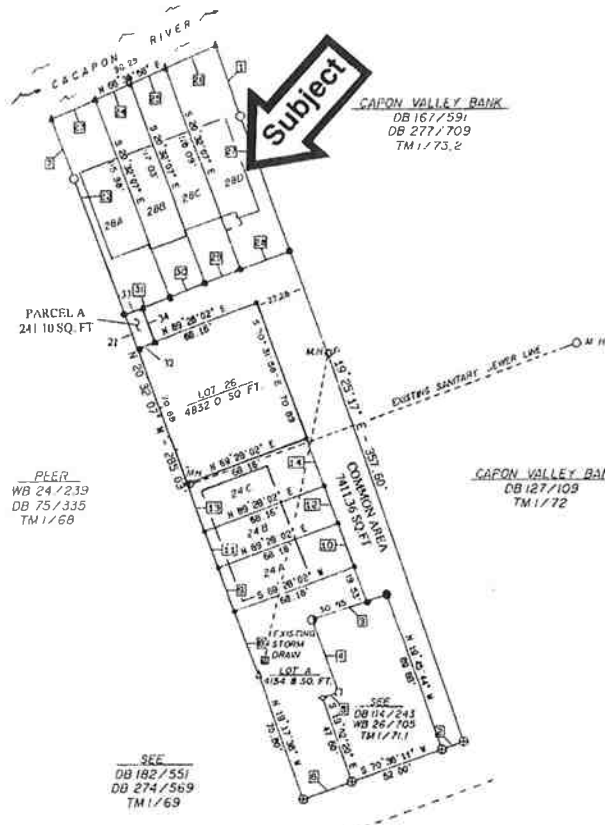




HARDY COUNTY MERIDIAN  
9° 45' WEST  
1990

PLAN OF SURVEY OF  
**CACAPON VILLAGE TOWN HOUSES**  
TOWN OF WARDENSVILLE, HARDY COUNTY, WEST VIRGINIA  
REFERENCE: DEED BOOK 220, PAGE 141 AND  
DEED BOOK 201, PAGE 92



LOT AREAS

- LOT 26A = 1840.3 50 FT
- LOT 26B = 1431.4 50 FT
- LOT 26C = 1840.3 50 FT
- LOT 26A = 2884.0 50 FT
- LOT 26B = 2446.7 50 FT
- LOT 26C = 2468.8 50 FT
- LOT 26D = 3565.0 50 FT

BEARING DIST.

	BEARING	DIST.		BEARING	DIST.
1	S 19° 25' 17" E	40.00'	16	S 40° 31' 58" E	27.00'
2	S 19° 25' 17" E	12.56'	17	N 20° 32' 07" W	21.00'
3	S 19° 25' 17" E	41.85'	18	S 20° 31' 58" E	21.00'
4	S 19° 15' 13" E	42.53'	19	N 20° 32' 07" W	27.00'
5	N 50° 56' 1" E	9.22'	20	S 20° 31' 58" E	27.00'
6	S 70° 38' 00" W	27.40'	21	N 20° 32' 07" W	24.11'
7	N 20° 32' 07" W	39.00'	22	N 20° 32' 07" W	79.73'
8	N 20° 32' 07" W	25.00'	23	N 66° 55' 08" E	23.03'
9	N 20° 32' 07" W	25.00'	24	N 66° 55' 08" E	21.03'
10	N 20° 32' 07" W	21.00'	25	N 66° 55' 08" E	21.03'
11	N 20° 32' 07" W	21.00'	26	N 66° 55' 08" E	31.90'
12	N 20° 32' 07" W	27.00'	27	S 19° 25' 17" E	79.67'
13	N 20° 32' 07" W	27.00'	28	S 69° 27' 53" W	28.84'
14	S 20° 31' 58" E	27.00'	29	S 69° 27' 53" W	21.00'
15	S 20° 31' 58" E	27.00'	30	S 68° 27' 23" W	21.00'
			31	S 69° 27' 53" W	28.00'
			32	S 59° 18' - 02" W	10.00'
			33	N 69° 17' - 53" E	10.00'
			34	N 20° - 32' - 07" E	24.11'

PLER  
WB 24 / 233  
DB 75 / 335  
TM 1 / 68

CACAPON VALLEY BANK  
DB 127 / 103  
TM 1 / 72

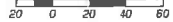
SEE  
DB 182 / 551  
DB 274 / 569  
TM 1 / 69



VICINITY MAP

LEGEND

- Ⓢ RAILROAD SPIKE FOUND
- NO 5 REINFORCING ROD FOUND
- PIPE FOUND
- ▣ RECTANGULAR IRON ROD FOUND
- ▲ CALCULATED POINT
- △ CORNER OF BUILDING
- NO 5 REINFORCING ROD SET
- ◊ CORNER OF SIDEWALK



This document presented and filed  
10/20/2016 02:00:00 PM

Gregory L. Ely, Hardy County, WV  
Transfer Tax \$0.00

*Handwritten signature and notes.*